



www.goldenkite.com

1216 Innocence



This pattern may not be copied, sold or in any other way handled in any way that violates the international copyright laws. If you get hold of this pattern (and or this document) in any other way than via a direct download from www.goldenkite.com or via a mail from us, you should report that to us at legal_actions@goldenkite.com .

Copyright (c) 2008-, Golden Kite. All rights reserved.

Copyright (c) 2008-, Golden Kite (Golden K.)
Internet: www.goldenkite.com

e-mail: info@goldenkite.com

Instructions

Thank you for choosing Golden Kite products!
We hope you will have lots of fun with this cross-stitch pattern!

Fabric

Press the fabric with an iron if needed. A good thing to prevent the fabric from fraying is to machine zigzag the edges.

On large patterns, it is easiest to start from the upper left corner of the design. Make sure you have the proper margins before starting and that the fabric piece is of the correct size. The best way to verify this is to count all stitch positions on the fabric from the upper left corner downwards and to the right to make sure there is enough space for the design.

Some prefer to start in the center of the design instead. To locate the center of the fabric, fold the fabric in half both vertically and horizontally. The center is located where these two folds meet.

Stitches

Each length of DMC tread consists of six strands.
Use two of these strands for all stitches.

Note that some colors may be mixes (or blends) between two different pure colors. In that case take one strand of the two colors each and thread the two strands into the needle at the same time for stitching.

All stitches are full cross-stitches. No half-stitching and no back-stitching is necessary in this pattern.

All cross-stitches will be worked into the holes in the fabric from left to right. Always use the larger holes in the fabric for the stitches. Adjacent stitches should meet in the same hole. Make sure all stitches cross in the same direction.

Please be careful when washing the finished embroidery! The cotton thread may bleed when washed. Only hand wash it in lukewarm water. Remove excess water by roll it in a towel and lay it flat to air dry. Natural fabrics may shrink slightly when washed. We do not recommend washing the embroidery if not absolutely necessary and we take no responsibility for any damage that may occur.

When you start using this product you agree that Golden Kite (Golden K), or any people working for or in association with Golden Kite (Golden K), cannot be set responsible for any physical, mental, economical or other type of damage caused by this product (including this document, pattern, threads, needles and any other parts received by you from Golden Kite (Golden K)).

This pattern may not be copied, sold or in any other way handled in any way that violates the international copyright laws. If you get hold of this pattern (and or this document) in any other way than via a direct download from www.goldenkite.com or via a mail from us, you should report that to us at legal_actions@goldenkite.com.

Innocence												

Solid Color Stitches. Use two strands of the specified color for these stitches.		
Symbol	DMC	Name
1	1	White 1
0	225	Shell Pink-UL VY LT
⊕	317	Pewter Gray
⊖	318	Steel Gray-LT
•	341	Blue Violet-LT
⌘	413	Pewter Gray -DK
●	414	Steel Gray-DK
⦿	415	Pearl Gray
*	451	Shell Gray-DK
◀	452	Shell Gray-MD
	453	Shell Gray-LT
↓	520	Fern Green-DK
❖	522	Fern Green
⊗	523	Fern Green-LT
⌘	524	Fern Green-VY LT
■	535	Ash Gray-VY LT
7	543	Beige Brown-UL VY LT
↘	610	Drab Brown-DK
⌘	611	Drab Brown
↗	632	Desert Sand-UL VY DK
◀	640	Beige Gray-VY DK
◊	642	Beige Gray-DK
×	644	Beige Gray-MD
▲	645	Beaver Gray-VY DK
*	646	Beaver Gray-DK
⌘	647	Beaver Gray-MD
⌘	648	Beaver Gray-LT
◦	712	Cream
)	747	Sky Blue-VY LT
8	762	Pearl Gray-VY LT
4	775	Baby Blue-VY LT
♦	793	Cornflower Blue-MD
~	819	Baby Pink-LT
5	822	Beige Gray-LT
✕	839	Beige Brown-DK
≡	841	Beige Brown-LT
#	842	Beige Brown-VY LT
↑	844	Beaver Brown-UL DK
♥	924	Gray Green-VY DK
♠	926	Gray Green-MD

⌘	927	Gray Green-LT
⊕	928	Gray Green-VY LT
✕	931	Antique Blue-MD
⌘	932	Antique Blue-LT
⊗	935	Avocado Green-DK
↑	950	Desert Sand-LT
⌘	3011	Khaki Green-DK
⌘	3012	Khaki Green-MD
⊗	3021	Brown Gray -VY DK
⊗	3022	Brown Gray -MD
*	3023	Brown Gray -LT
H	3024	Brown Gray -VY LT
●	3031	Mocha Brown-VY DK
⌘	3032	Mocha Brown-MD
√	3033	Mocha Brown-VY LT
⊕	3042	Antique Violet-LT
⊗	3051	Green Gray-DK
⌘	3052	Green Gray-MD
⌘	3053	Green Gray
3	3072	Beaver Gray-VY LT
8	3362	Pine Green-DK
◦	3363	Pine Green-MD
×	3364	Pine Green
..	3743	Antique Violet-VY LT
⌘	3747	Blue Violet-VY LT
⌘	3752	Antique Blue-VY LT
⌘	3753	Antique Blue-UL VY LT
^	3756	Baby Blue-UL VY LT
⌘	3774	Desert Sand-VY LT
◆	3781	Mocha Brown-DK
⌘	3782	Mocha Brown-LT
♣	3787	Brown Gray -DK
⊕	3790	Beige Gray-UL DK
⊗	3799	Pewter Gray -VY DK
▼	3860	Cocoa
★	3861	Cocoa-LT
⌘	3862	Mocha Beige-DK
⌘	3863	Mocha Beige-MD
⌘	3864	Mocha Beige-LT
n	3865	Winter White
+	3866	Mocha Brown-UL VY LT
(Ecu	Ecu

Blend Stitches. Use one strand of each of DMC1 and DMC2 for these stitches.				
Symbol	DMC1	Name1	DMC2	Name2
⌘	3072	Beaver Gray-VY LT	3866	Mocha Brown-UL VY LT
⊗	415	Pearl Gray	3752	Antique Blue-VY LT
⊗	414	Steel Gray-DK	503	Blue Green-MD
➔	839	Beige Brown-DK	3787	Brown Gray -DK
⌘	645	Beaver Gray-VY DK	844	Beaver Brown-UL DK
⊗	3363	Pine Green-MD	3787	Brown Gray -DK

▣	415	Pearl Gray	927	Gray Green-LT
:	762	Pearl Gray-VY LT	3756	Baby Blue-UL VY LT
△	3756	Baby Blue-UL VY LT	3865	Winter White
«	1	White 1	3865	Winter White
⌘	453	Shell Gray-LT	543	Beige Brown-UL VY LT
■	310	Black	3799	Pewter Gray-VY DK
▣	645	Beaver Gray-VY DK	646	Beaver Gray-DK
⌘	647	Beaver Gray-MD	3861	Cocoa-LT
⊕	927	Gray Green-LT	928	Gray Green-VY LT
⊗	3363	Pine Green-MD	3790	Beige Gray-UL DK
◇	3072	Beaver Gray-VY LT	3713	Salmon-VY LT
+	645	Beaver Gray-VY DK	3363	Pine Green-MD
✱	3362	Pine Green-DK	3363	Pine Green-MD
▣	502	Blue Green	645	Beaver Gray-VY DK
■	310	Black	935	Avocado Green-DK
⌘	844	Beaver Brown-UL DK	3021	Brown Gray-VY DK
☾	640	Beige Gray-VY DK	642	Beige Gray-DK
L	414	Steel Gray-DK	415	Pearl Gray
☾	640	Beige Gray-VY DK	3790	Beige Gray-UL DK
◎	318	Steel Gray-LT	793	Cornflower Blue-MD
▲	414	Steel Gray-DK	927	Gray Green-LT
●	935	Avocado Green-DK	3799	Pewter Gray-VY DK
//	503	Blue Green-MD	647	Beaver Gray-MD
✕	414	Steel Gray-DK	647	Beaver Gray-MD
○	415	Pearl Gray	3072	Beaver Gray-VY LT
∞	712	Cream	819	Baby Pink-LT
⌘	453	Shell Gray-LT	778	Antique Mauve-VY LT
⊗	452	Shell Gray-MD	842	Beige Brown-VY LT
=	646	Beaver Gray-DK	3363	Pine Green-MD
●	502	Blue Green	844	Beaver Brown-UL DK
•	225	Shell Pink-UL VY LT	712	Cream
×	452	Shell Gray-MD	648	Beaver Gray-LT
▣	648	Beaver Gray-LT	927	Gray Green-LT
☾	611	Drab Brown	3787	Brown Gray-DK
✱	642	Beige Gray-DK	3022	Brown Gray-MD
⌘	535	Ash Gray-VY LT	3363	Pine Green-MD
⊗	341	Blue Violet-LT	794	Cornflower Blue-LT
↖	415	Pearl Gray	452	Shell Gray-MD
⌘	453	Shell Gray-LT	928	Gray Green-VY LT
●	3023	Brown Gray-LT	648	Beaver Gray-LT
•	453	Shell Gray-LT	3072	Beaver Gray-VY LT
⌘	819	Baby Pink-LT	3866	Mocha Brown-UL VY LT
\$	543	Beige Brown-UL VY LT	647	Beaver Gray-MD
▲	3022	Brown Gray-MD	3863	Mocha Beige-MD
♡	819	Baby Pink-LT	3072	Beaver Gray-VY LT
—	950	Desert Sand-LT	3713	Salmon-VY LT
▲	341	Blue Violet-LT	3747	Blue Violet-VY LT
■	3022	Brown Gray-MD	3790	Beige Gray-UL DK
∅	822	Beige Gray-LT	ecru	Ecru
⊗	647	Beaver Gray-MD	3023	Brown Gray-LT
↓	645	Beaver Gray-VY DK	3362	Pine Green-DK

This table specifies how much thread of each color is required to stitch this pattern. It is good to know that one complete DMC skein contains 313 inches (795 cm) thread.

DMC	Name	Usage (cm)	Usage (inch)	Usage (cm)	Usage (inch)	Usage (cm)	Usage (inch)
		14		16		18	
1	White 1	114	44	109	42	98	38
225	Shell Pink-UL VY LT	24	9	23	9	21	8
310	Black	2488	979	2370	933	2133	839
317	Pewter Gray	53	20	51	20	46	18
318	Steel Gray-LT	117	46	111	43	100	39
341	Blue Violet-LT	46	18	44	17	39	15
413	Pewter Gray -DK	60	23	57	22	51	20
414	Steel Gray-DK	564	222	537	211	484	190
415	Pearl Gray	718	282	684	269	615	242
451	Shell Gray-DK	51	20	49	19	44	17
452	Shell Gray-MD	208	81	198	77	178	70
453	Shell Gray-LT	461	181	439	172	395	155
502	Blue Green	90	35	86	33	77	30
503	Blue Green-MD	174	68	165	64	149	58
520	Fern Green-DK	137	53	130	51	117	46
522	Fern Green	86	33	81	31	73	28
523	Fern Green-LT	9	3	9	3	8	3
524	Fern Green-VY LT	14	5	14	5	12	4
535	Ash Gray -VY LT	487	191	464	182	417	164
543	Beige Brown-UL VY LT	87	34	83	32	75	29
610	Drab Brown-DK	23	9	22	8	20	7
611	Drab Brown	64	25	61	24	55	21
632	Desert Sand-UL VY DK	1	1	1	1	0	1
640	Beige Gray-VY DK	166	65	158	62	142	55
642	Beige Gray-DK	338	133	322	126	290	114
644	Beige Gray-MD	33	12	31	12	28	11
645	Beaver Gray-VY DK	1968	774	1874	737	1687	664
646	Beaver Gray-DK	1770	696	1685	663	1517	597
647	Beaver Gray-MD	1103	434	1050	413	945	372
648	Beaver Gray-LT	554	218	528	207	475	187
712	Cream	68	26	65	25	58	22
747	Sky Blue-VY LT	17	6	16	6	14	5
762	Pearl Gray-VY LT	296	116	282	111	254	100
775	Baby Blue-VY LT	85	33	81	31	73	28
778	Antique Mauve-VY LT	17	6	16	6	15	5
793	Cornflower Blue-MD	14	5	14	5	12	4
794	Cornflower Blue-LT	10	3	9	3	8	3
819	Baby Pink-LT	179	70	170	66	153	60
822	Beige Gray-LT	49	19	47	18	42	16
839	Beige Brown-DK	109	42	104	40	93	36
841	Beige Brown-LT	25	9	24	9	22	8
842	Beige Brown-VY LT	53	20	50	19	45	17
844	Beaver Brown-UL DK	2397	943	2283	898	2055	809
924	Gray Green-VY DK	15	5	15	5	13	5
926	Gray Green-MD	63	24	60	23	54	21
927	Gray Green-LT	884	348	842	331	758	298
928	Gray Green-VY LT	463	182	441	173	397	156
931	Antique Blue-MD	11	4	11	4	10	3
932	Antique Blue-LT	7	2	7	2	6	2
935	Avocado Green-DK	1214	477	1156	455	1040	409
950	Desert Sand-LT	5	1	4	1	4	1
3011	Khaki Green-DK	10	3	10	3	9	3
3012	Khaki Green-MD	5	1	5	1	5	1
3021	Brown Gray-VY DK	1156	455	1101	433	991	390

Copyright (c) 2008-, Golden Kite (Golden K.)

Internet: www.goldenkite.com

e-mail: info@goldenkite.com

3022	Brown Gray -MD	1111	437	1058	416	952	374
3023	Brown Gray -LT	465	183	442	174	398	156
3024	Brown Gray -VY LT	153	60	145	57	131	51
3031	Mocha Brown-VY DK	85	33	81	31	73	28
3032	Mocha Brown-MD	38	14	36	14	32	12
3033	Mocha Brown-VY LT	19	7	18	7	16	6
3042	Antique Violet-LT	11	4	10	3	9	3
3051	Green Gray-DK	56	22	53	20	48	18
3052	Green Gray-MD	104	40	99	38	89	35
3053	Green Gray	15	5	15	5	13	5
3072	Beaver Gray -VY LT	602	237	573	225	516	203
3362	Pine Green-DK	513	201	489	192	440	173
3363	Pine Green-MD	950	374	905	356	814	320
3364	Pine Green	7	2	6	2	6	2
3713	Salmon-VY LT	36	14	34	13	31	12
3743	Antique Violet-VY LT	112	44	106	41	96	37
3747	Blue Violet-VY LT	50	19	48	18	43	16
3752	Antique Blue-VY LT	103	40	98	38	88	34
3753	Antique Blue-UL VY LT	263	103	250	98	225	88
3756	Baby Blue-UL VY LT	665	261	634	249	570	224
3774	Desert Sand-VY LT	3	1	3	1	3	1
3781	Mocha Brown-DK	14	5	13	5	12	4
3782	Mocha Brown-LT	33	12	31	12	28	11
3787	Brown Gray -DK	917	361	873	343	786	309
3790	Beige Gray-UL DK	355	139	338	133	304	119
3799	Pewter Gray -VY DK	4381	1724	4172	1642	3755	1478
3860	Cocoa	15	5	14	5	13	5
3861	Cocoa-LT	109	42	103	40	93	36
3862	Mocha Beige-DK	3	1	3	1	3	1
3863	Mocha Beige-MD	47	18	45	17	40	15
3864	Mocha Beige-LT	4	1	4	1	4	1
3865	Winter White	438	172	417	164	375	147
3866	Mocha Brown-UL VY LT	186	73	177	69	159	62
ecru	Ecru	31	12	30	11	27	10

Extended thread usage table.							
DMC	Name	Usage (cm)	Usage (inch)	Usage (cm)	Usage (inch)	Usage (cm)	Usage (inch)
		10		12		24	
1	White 1	176	68	147	57	74	29
225	Shell Pink-UL VY LT	38	14	32	12	16	6
310	Black	3839	1510	3200	1259	1600	629
317	Pewter Gray	83	32	69	27	35	14
318	Steel Gray-LT	180	70	150	59	75	29
341	Blue Violet-LT	70	27	59	23	29	11
413	Pewter Gray -DK	92	36	77	30	38	15
414	Steel Gray-DK	871	342	726	285	363	143
415	Pearl Gray	1107	436	923	363	461	182
451	Shell Gray-DK	79	31	66	26	33	13
452	Shell Gray-MD	320	126	267	105	134	53
453	Shell Gray-LT	711	279	593	233	296	116
502	Blue Green	139	54	116	45	58	23
503	Blue Green-MD	268	104	224	87	112	44
520	Fern Green-DK	211	83	176	69	88	35
522	Fern Green	131	50	110	42	55	21
523	Fern Green-LT	14	5	12	5	6	2
524	Fern Green-VY LT	22	7	18	6	9	3

535	Ash Gray-VY LT	751	295	626	246	313	123
543	Beige Brown-UL VY LT	135	52	113	44	56	22
610	Drab Brown-DK	36	13	30	11	15	5
611	Drab Brown	99	38	83	32	41	16
632	Desert Sand-UL VY DK	0	2	0	2	0	1
640	Beige Gray-VY DK	256	99	213	83	107	41
642	Beige Gray-DK	522	205	435	171	218	86
644	Beige Gray-MD	50	20	42	17	21	8
645	Beaver Gray-VY DK	3037	1195	2531	996	1265	498
646	Beaver Gray-DK	2731	1075	2276	896	1138	448
647	Beaver Gray-MD	1701	670	1418	558	709	279
648	Beaver Gray-LT	855	337	713	281	356	140
712	Cream	104	40	87	33	44	17
747	Sky Blue-VY LT	25	9	21	8	11	4
762	Pearl Gray-VY LT	457	180	381	150	191	75
775	Baby Blue-VY LT	131	50	110	42	55	21
778	Antique Mauve-VY LT	27	9	23	8	11	4
793	Cornflower Blue-MD	22	7	18	6	9	3
794	Cornflower Blue-LT	14	5	12	5	6	2
819	Baby Pink-LT	275	108	230	90	115	45
822	Beige Gray-LT	76	29	63	24	32	12
839	Beige Brown-DK	167	65	140	54	70	27
841	Beige Brown-LT	40	14	33	12	17	6
842	Beige Brown-VY LT	81	31	68	26	34	13
844	Beaver Brown-UL DK	3699	1456	3083	1214	1541	607
924	Gray Green-VY DK	23	9	20	8	10	4
926	Gray Green-MD	97	38	81	32	41	16
927	Gray Green-LT	1364	536	1137	447	569	224
928	Gray Green-VY LT	715	281	596	234	298	117
931	Antique Blue-MD	18	5	15	5	8	2
932	Antique Blue-LT	11	4	9	3	5	2
935	Avocado Green-DK	1872	736	1560	614	780	307
950	Desert Sand-LT	7	2	6	2	3	1
3011	Khaki Green-DK	16	5	14	5	7	2
3012	Khaki Green-MD	9	2	8	2	4	1
3021	Brown Gray-VY DK	1784	702	1487	585	743	293
3022	Brown Gray-MD	1714	673	1428	561	714	281
3023	Brown Gray-LT	716	281	597	234	299	117
3024	Brown Gray-VY LT	236	92	197	77	98	38
3031	Mocha Brown-VY DK	131	50	110	42	55	21
3032	Mocha Brown-MD	58	22	48	18	24	9
3033	Mocha Brown-VY LT	29	11	24	9	12	5
3042	Antique Violet-LT	16	5	14	5	7	2
3051	Green Gray-DK	86	32	72	27	36	14
3052	Green Gray-MD	160	63	134	53	67	26
3053	Green Gray	23	9	20	8	10	4
3072	Beaver Gray-VY LT	929	365	774	305	387	152
3362	Pine Green-DK	792	311	660	260	330	130
3363	Pine Green-MD	1465	576	1221	480	611	240
3364	Pine Green	11	4	9	3	5	2
3713	Salmon-VY LT	56	22	47	18	23	9
3743	Antique Violet-VY LT	173	67	144	56	72	28
3747	Blue Violet-VY LT	77	29	65	24	32	12
3752	Antique Blue-VY LT	158	61	132	51	66	26
3753	Antique Blue-UL VY LT	405	158	338	132	169	66
3756	Baby Blue-UL VY LT	1026	403	855	336	428	168
3774	Desert Sand-VY LT	5	2	5	2	2	1
3781	Mocha Brown-DK	22	7	18	6	9	3
3782	Mocha Brown-LT	50	20	42	17	21	8

Copyright (c) 2008-, Golden Kite (Golden K.)

Internet: www.goldenkite.com

e-mail: info@goldenkite.com

3787	Brown Gray -DK	1415	556	1179	464	590	232
3790	Beige Gray-UL DK	547	214	456	179	228	89
3799	Pewter Gray-VY DK	6759	2660	5633	2217	2816	1109
3860	Cocoa	23	9	20	8	10	4
3861	Cocoa-LT	167	65	140	54	70	27
3862	Mocha Beige-DK	5	2	5	2	2	1
3863	Mocha Beige-MD	72	27	60	23	30	11
3864	Mocha Beige-LT	7	2	6	2	3	1
3865	Winter White	675	265	563	221	281	110
3866	Mocha Brown-UL VY LT	286	112	239	93	119	47
ecru	Ecru	49	18	41	15	20	8

Extended thread usage table.							
DMC	Name	Usage (cm)	Usage (inch)	Usage (cm)	Usage (inch)	Usage (cm)	Usage (inch)
		25		26		27	
1	White 1	71	27	68	26	65	25
225	Shell Pink-UL VY LT	15	6	15	6	14	5
310	Black	1536	604	1477	581	1422	559
317	Pewter Gray	33	13	32	12	31	12
318	Steel Gray-LT	72	28	69	27	67	26
341	Blue Violet-LT	28	11	27	10	26	10
413	Pewter Gray -DK	37	14	35	14	34	13
414	Steel Gray-DK	348	137	335	132	323	127
415	Pearl Gray	443	174	426	168	410	161
451	Shell Gray-DK	32	12	30	12	29	11
452	Shell Gray-MD	128	50	123	48	119	47
453	Shell Gray-LT	284	112	273	107	263	103
502	Blue Green	55	22	53	21	51	20
503	Blue Green-MD	107	42	103	40	99	39
520	Fern Green-DK	84	33	81	32	78	31
522	Fern Green	53	20	51	19	49	19
523	Fern Green-LT	6	2	6	2	5	2
524	Fern Green-VY LT	9	3	8	3	8	3
535	Ash Gray-VY LT	300	118	289	114	278	109
543	Beige Brown-UL VY LT	54	21	52	20	50	19
610	Drab Brown-DK	14	5	14	5	13	5
611	Drab Brown	40	15	38	15	37	14
632	Desert Sand-UL VY DK	0	1	0	1	0	1
640	Beige Gray-VY DK	102	40	98	38	95	37
642	Beige Gray-DK	209	82	201	79	193	76
644	Beige Gray-MD	20	8	19	8	19	7
645	Beaver Gray-VY DK	1215	478	1168	460	1125	443
646	Beaver Gray-DK	1092	430	1050	413	1011	398
647	Beaver Gray-MD	680	268	654	258	630	248
648	Beaver Gray-LT	342	135	329	129	317	125
712	Cream	42	16	40	15	39	15
747	Sky Blue-VY LT	10	4	10	3	9	3
762	Pearl Gray-VY LT	183	72	176	69	169	67
775	Baby Blue-VY LT	53	20	51	19	49	19
778	Antique Mauve-VY LT	11	4	10	3	10	3
793	Cornflower Blue-MD	9	3	8	3	8	3
794	Cornflower Blue-LT	6	2	6	2	5	2
819	Baby Pink-LT	110	43	106	42	102	40
822	Beige Gray-LT	30	12	29	11	28	11
839	Beige Brown-DK	67	26	64	25	62	24
841	Beige Brown-LT	16	6	15	6	15	5

842	Beige Brown-VY LT	32	12	31	12	30	11
844	Beaver Brown-UL DK	1480	582	1423	560	1370	539
924	Gray Green-VY DK	9	4	9	3	9	3
926	Gray Green-MD	39	15	37	15	36	14
927	Gray Green-LT	546	215	525	206	505	199
928	Gray Green-VY LT	286	112	275	108	265	104
931	Antique Blue-MD	7	2	7	2	7	2
932	Antique Blue-LT	4	1	4	1	4	1
935	Avocado Green-DK	749	294	720	283	693	273
950	Desert Sand-LT	3	1	3	1	3	1
3011	Khaki Green-DK	6	2	6	2	6	2
3012	Khaki Green-MD	4	1	3	1	3	1
3021	Brown Gray -VY DK	714	281	686	270	661	260
3022	Brown Gray -MD	685	269	659	259	635	249
3023	Brown Gray -LT	287	112	276	108	265	104
3024	Brown Gray -VY LT	94	37	91	35	87	34
3031	Mocha Brown-VY DK	53	20	51	19	49	19
3032	Mocha Brown-MD	23	9	22	8	21	8
3033	Mocha Brown-VY LT	12	4	11	4	11	4
3042	Antique Violet-LT	6	2	6	2	6	2
3051	Green Gray-DK	35	13	33	12	32	12
3052	Green Gray-MD	64	25	62	24	59	23
3053	Green Gray	9	4	9	3	9	3
3072	Beaver Gray-VY LT	372	146	357	141	344	135
3362	Pine Green-DK	317	125	305	120	293	115
3363	Pine Green-MD	586	230	564	222	543	213
3364	Pine Green	4	1	4	1	4	1
3713	Salmon-VY LT	22	9	21	8	21	8
3743	Antique Violet-VY LT	69	27	66	26	64	25
3747	Blue Violet-VY LT	31	12	30	11	29	11
3752	Antique Blue-VY LT	63	24	61	24	59	23
3753	Antique Blue-UL VY LT	162	63	156	61	150	59
3756	Baby Blue-UL VY LT	410	161	395	155	380	149
3774	Desert Sand-VY LT	2	1	2	1	2	1
3781	Mocha Brown-DK	9	3	8	3	8	3
3782	Mocha Brown-LT	20	8	19	8	19	7
3787	Brown Gray -DK	566	222	544	214	524	206
3790	Beige Gray-UL DK	219	86	210	82	203	79
3799	Pewter Gray -VY DK	2704	1064	2600	1023	2503	985
3860	Cocoa	9	4	9	3	9	3
3861	Cocoa-LT	67	26	64	25	62	24
3862	Mocha Beige-DK	2	1	2	1	2	1
3863	Mocha Beige-MD	29	11	28	10	27	10
3864	Mocha Beige-LT	3	1	3	1	3	1
3865	Winter White	270	106	260	102	250	98
3866	Mocha Brown-UL VY LT	114	45	110	43	106	41
ecru	Ecru	19	7	19	7	18	7

Extended thread usage table.							
DMC	Name	Usage (cm)	Usage (inch)	Usage (cm)	Usage (inch)	Usage (cm)	Usage (inch)
		28		30		32	
1	White 1	63	24	59	23	55	21
225	Shell Pink-UL VY LT	14	5	13	5	12	5
310	Black	1371	539	1280	503	1200	472
317	Pewter Gray	30	12	28	11	26	10
318	Steel Gray-LT	64	25	60	23	56	22
341	Blue Violet-LT	25	10	23	9	22	8

Copyright (c) 2008-, Golden Kite (Golden K.)

Internet: www.goldenkite.com

e-mail: info@goldenkite.com

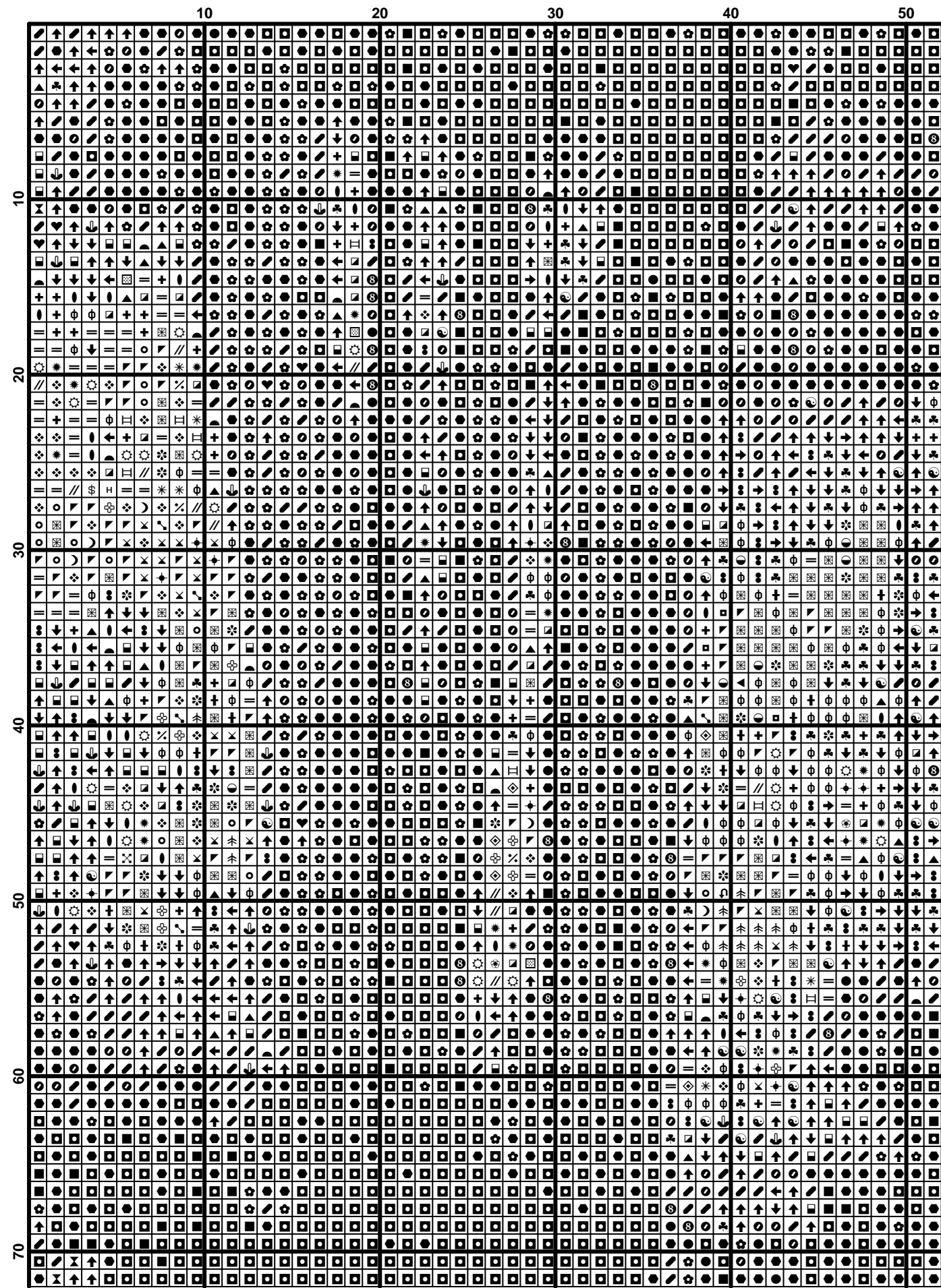
413	Pewter Gray -DK	33	13	31	12	29	11
414	Steel Gray-DK	311	122	290	114	272	107
415	Pearl Gray	395	156	369	145	346	136
451	Shell Gray-DK	28	11	26	10	25	10
452	Shell Gray-MD	114	45	107	42	100	39
453	Shell Gray-LT	254	100	237	93	222	87
502	Blue Green	50	19	46	18	43	17
503	Blue Green-MD	96	37	89	35	84	33
520	Fern Green-DK	75	30	70	28	66	26
522	Fern Green	47	18	44	17	41	16
523	Fern Green-LT	5	2	5	2	5	2
524	Fern Green-VY LT	8	3	7	2	7	2
535	Ash Gray -VY LT	268	105	250	98	235	92
543	Beige Brown-UL VY LT	48	19	45	17	42	16
610	Drab Brown-DK	13	5	12	4	11	4
611	Drab Brown	35	14	33	13	31	12
632	Desert Sand-UL VY DK	0	1	0	1	0	1
640	Beige Gray-VY DK	91	35	85	33	80	31
642	Beige Gray-DK	186	73	174	68	163	64
644	Beige Gray-MD	18	7	17	7	16	6
645	Beaver Gray-VY DK	1085	427	1012	398	949	374
646	Beaver Gray-DK	975	384	910	358	853	336
647	Beaver Gray-MD	608	239	567	223	532	209
648	Beaver Gray-LT	305	120	285	112	267	105
712	Cream	37	14	35	13	33	12
747	Sky Blue-VY LT	9	3	8	3	8	3
762	Pearl Gray-VY LT	163	64	152	60	143	56
775	Baby Blue-VY LT	47	18	44	17	41	16
778	Antique Mauve-VY LT	10	3	9	3	8	3
793	Cornflower Blue-MD	8	3	7	2	7	2
794	Cornflower Blue-LT	5	2	5	2	5	2
819	Baby Pink-LT	98	39	92	36	86	34
822	Beige Gray-LT	27	10	25	10	24	9
839	Beige Brown-DK	60	23	56	22	52	20
841	Beige Brown-LT	14	5	13	5	12	5
842	Beige Brown-VY LT	29	11	27	10	25	10
844	Beaver Brown-UL DK	1321	520	1233	485	1156	455
924	Gray Green-VY DK	8	3	8	3	7	3
926	Gray Green-MD	35	14	32	13	30	12
927	Gray Green-LT	487	192	455	179	426	168
928	Gray Green-VY LT	255	100	238	94	223	88
931	Antique Blue-MD	6	2	6	2	6	2
932	Antique Blue-LT	4	1	4	1	3	1
935	Avocado Green-DK	669	263	624	245	585	230
950	Desert Sand-LT	3	1	2	1	2	1
3011	Khaki Green-DK	6	2	5	2	5	2
3012	Khaki Green-MD	3	1	3	1	3	1
3021	Brown Gray -VY DK	637	251	595	234	557	219
3022	Brown Gray -MD	612	240	571	224	536	210
3023	Brown Gray -LT	256	100	239	94	224	88
3024	Brown Gray -VY LT	84	33	79	31	74	29
3031	Mocha Brown-VY DK	47	18	44	17	41	16
3032	Mocha Brown-MD	21	8	19	7	18	7
3033	Mocha Brown-VY LT	10	4	10	4	9	3
3042	Antique Violet-LT	6	2	5	2	5	2
3051	Green Gray-DK	31	12	29	11	27	10
3052	Green Gray-MD	57	23	53	21	50	20
3053	Green Gray	8	3	8	3	7	3
3072	Beaver Gray-VY LT	332	131	310	122	290	114

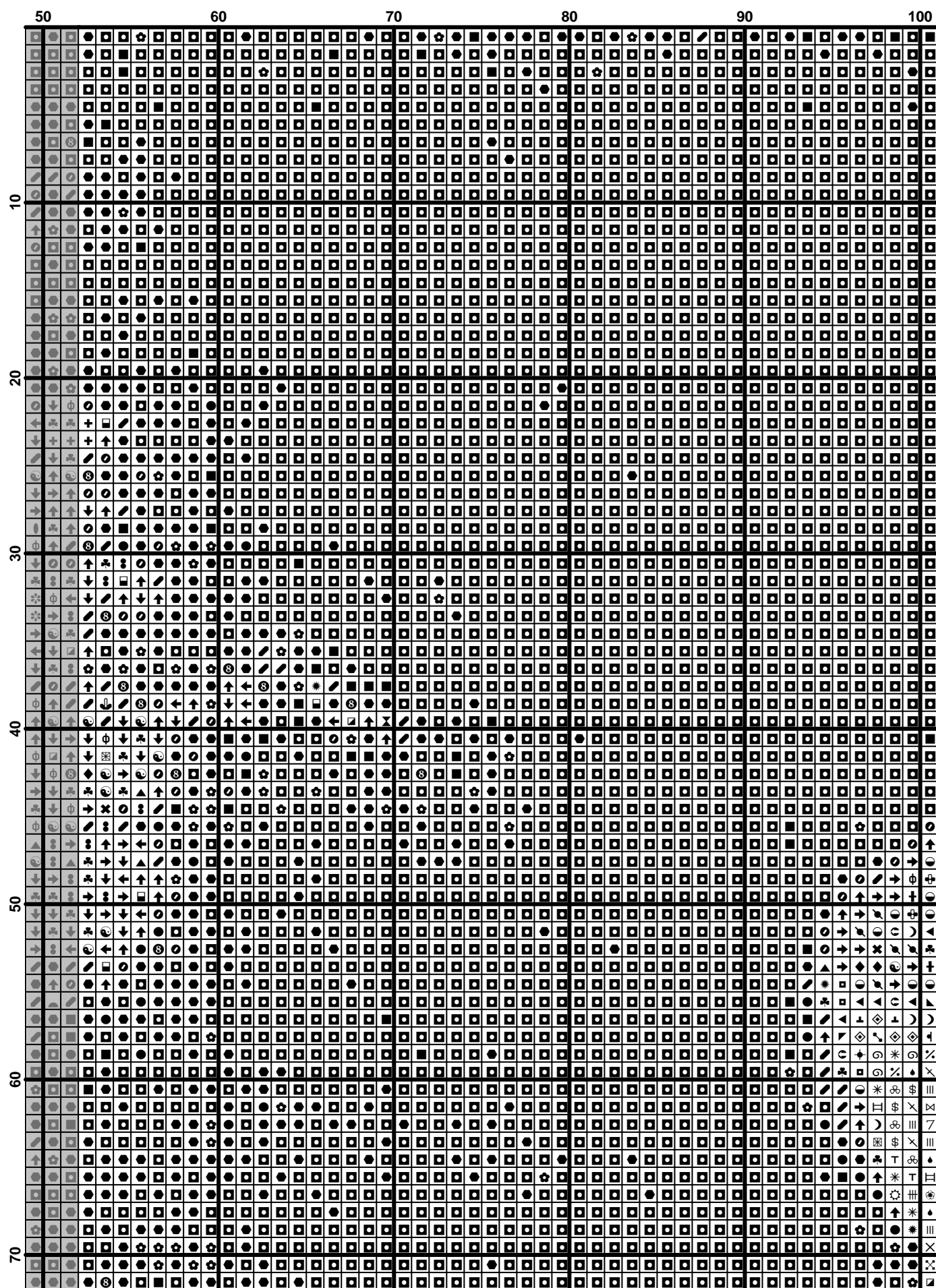
Copyright (c) 2008-, Golden Kite (Golden K.)

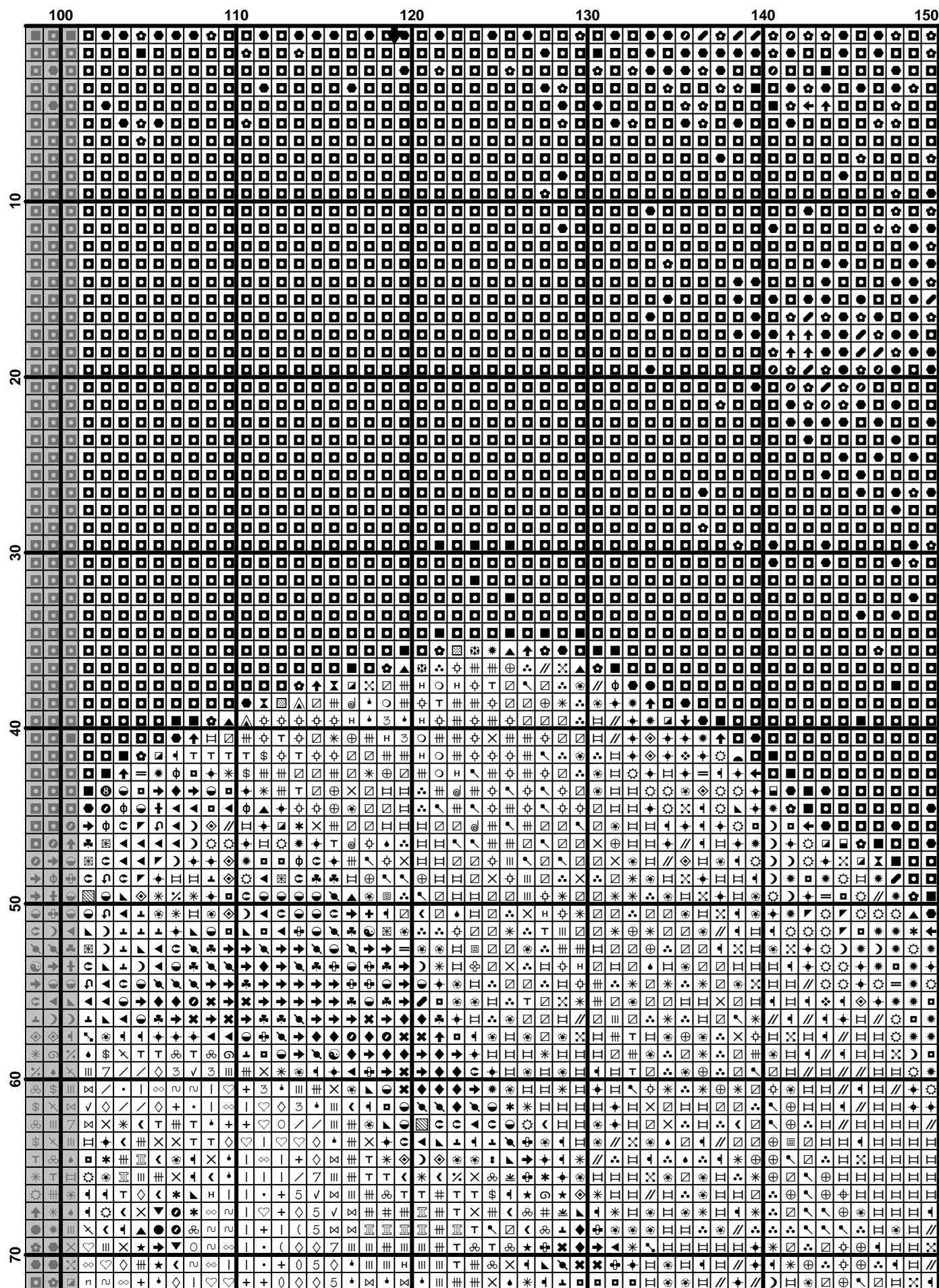
Internet: www.goldenkite.com

e-mail: info@goldenkite.com

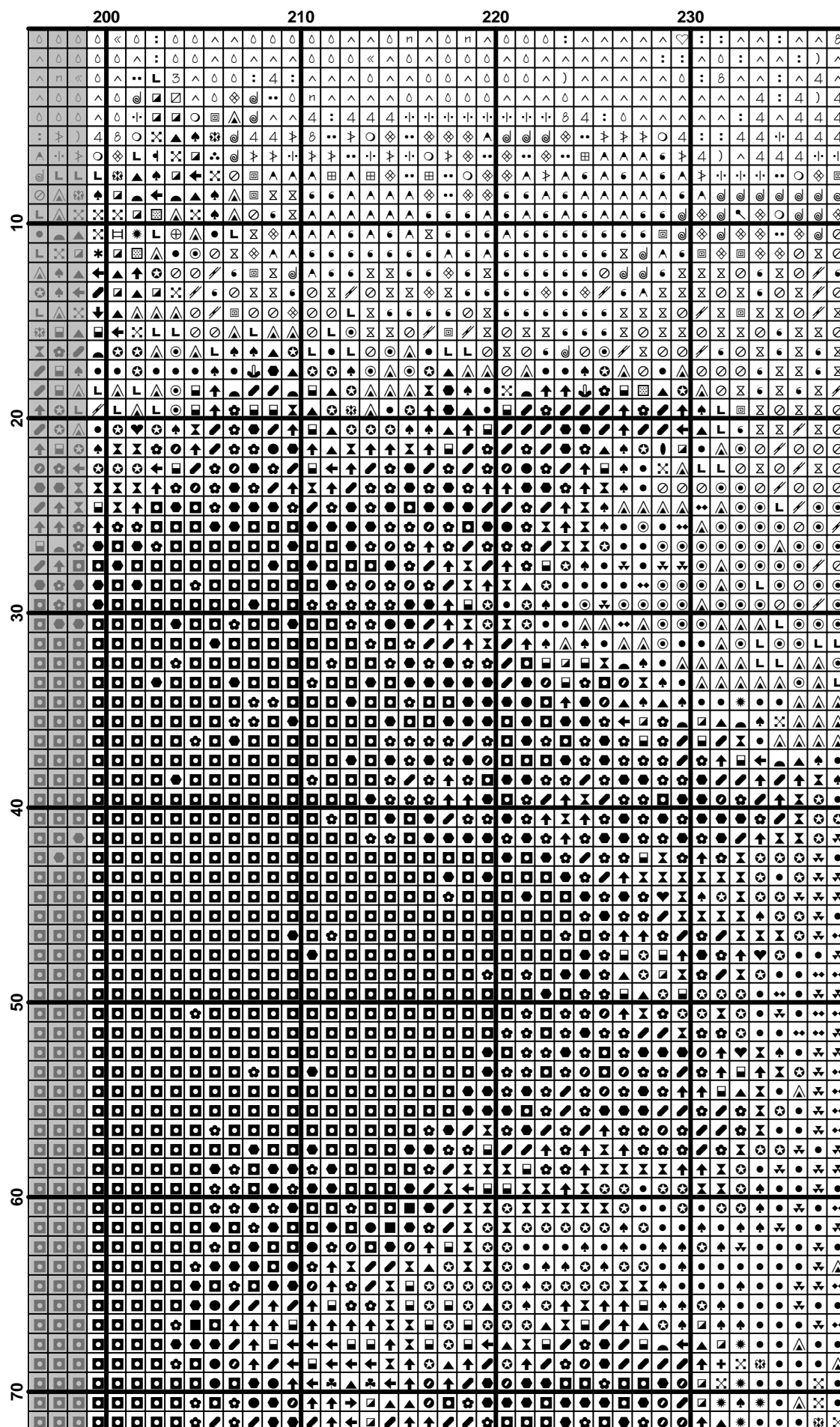
3362	Pine Green-DK	283	111	264	104	248	97
3363	Pine Green-MD	523	206	488	192	458	180
3364	Pine Green	4	1	4	1	3	1
3713	Salmon-VY LT	20	8	19	7	17	7
3743	Antique Violet-VY LT	62	24	58	22	54	21
3747	Blue Violet-VY LT	28	10	26	10	24	9
3752	Antique Blue-VY LT	57	22	53	20	50	19
3753	Antique Blue-UL VY LT	145	57	135	53	127	50
3756	Baby Blue-UL VY LT	366	144	342	134	321	126
3774	Desert Sand-VY LT	2	1	2	1	2	1
3781	Mocha Brown-DK	8	3	7	2	7	2
3782	Mocha Brown-LT	18	7	17	7	16	6
3787	Brown Gray -DK	505	199	472	185	442	174
3790	Beige Gray -UL DK	195	77	182	71	171	67
3799	Pewter Gray -VY DK	2414	950	2253	887	2112	831
3860	Cocoa	8	3	8	3	7	3
3861	Cocoa-LT	60	23	56	22	52	20
3862	Mocha Beige-DK	2	1	2	1	2	1
3863	Mocha Beige-MD	26	10	24	9	23	8
3864	Mocha Beige-LT	3	1	2	1	2	1
3865	Winter White	241	95	225	88	211	83
3866	Mocha Brown-UL VY LT	102	40	95	37	89	35
ecru	Ecru	17	6	16	6	15	6

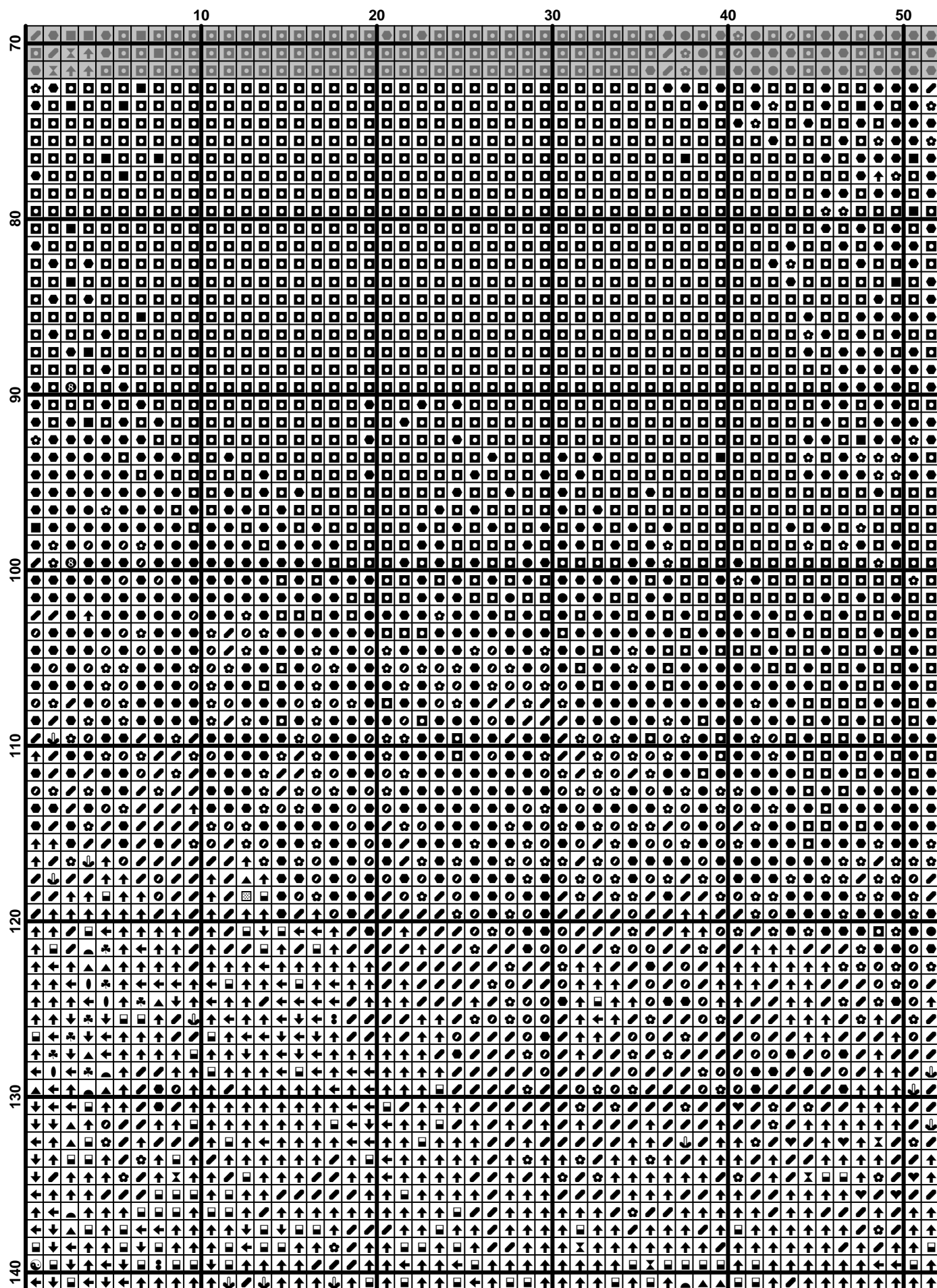


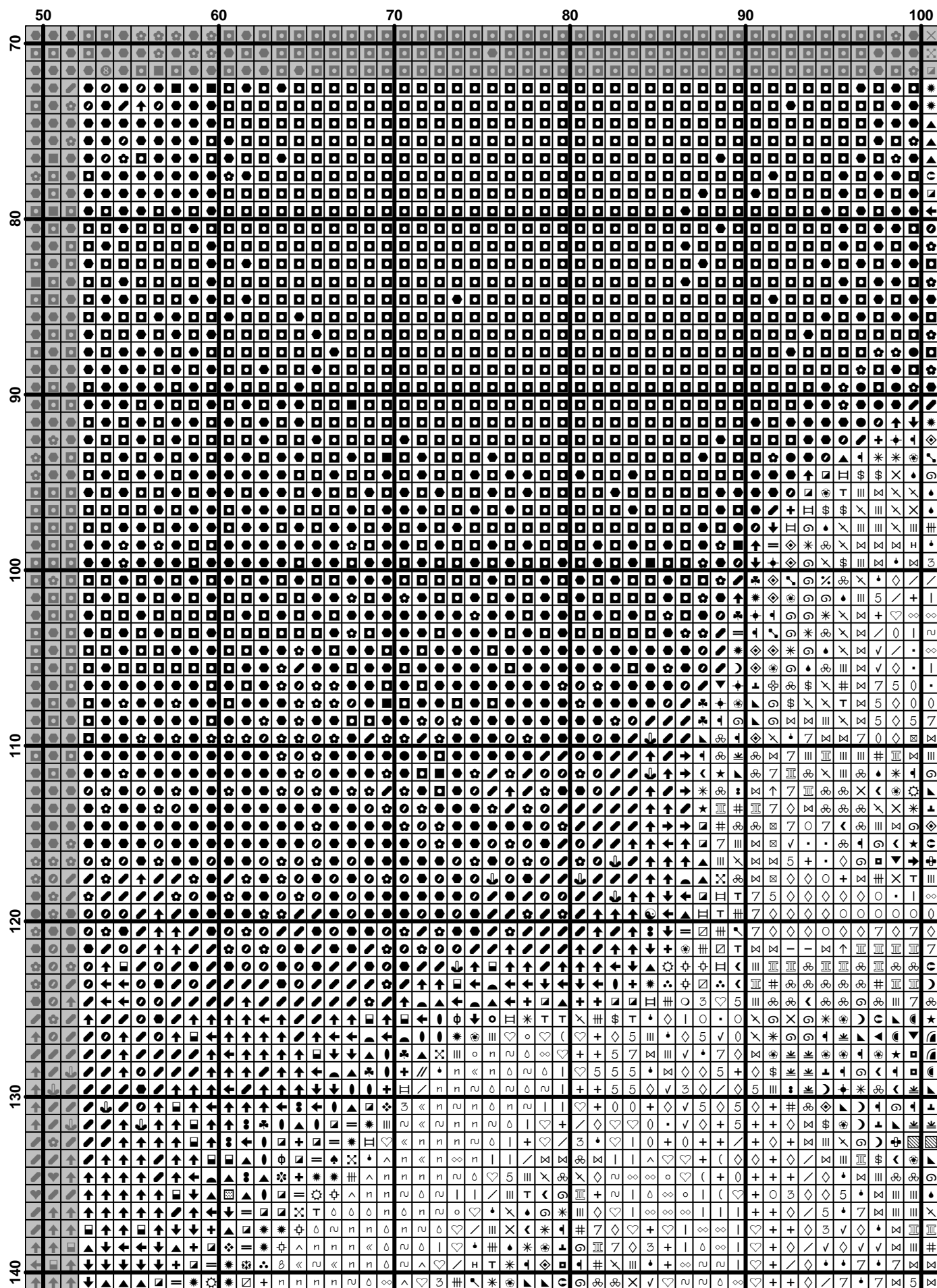




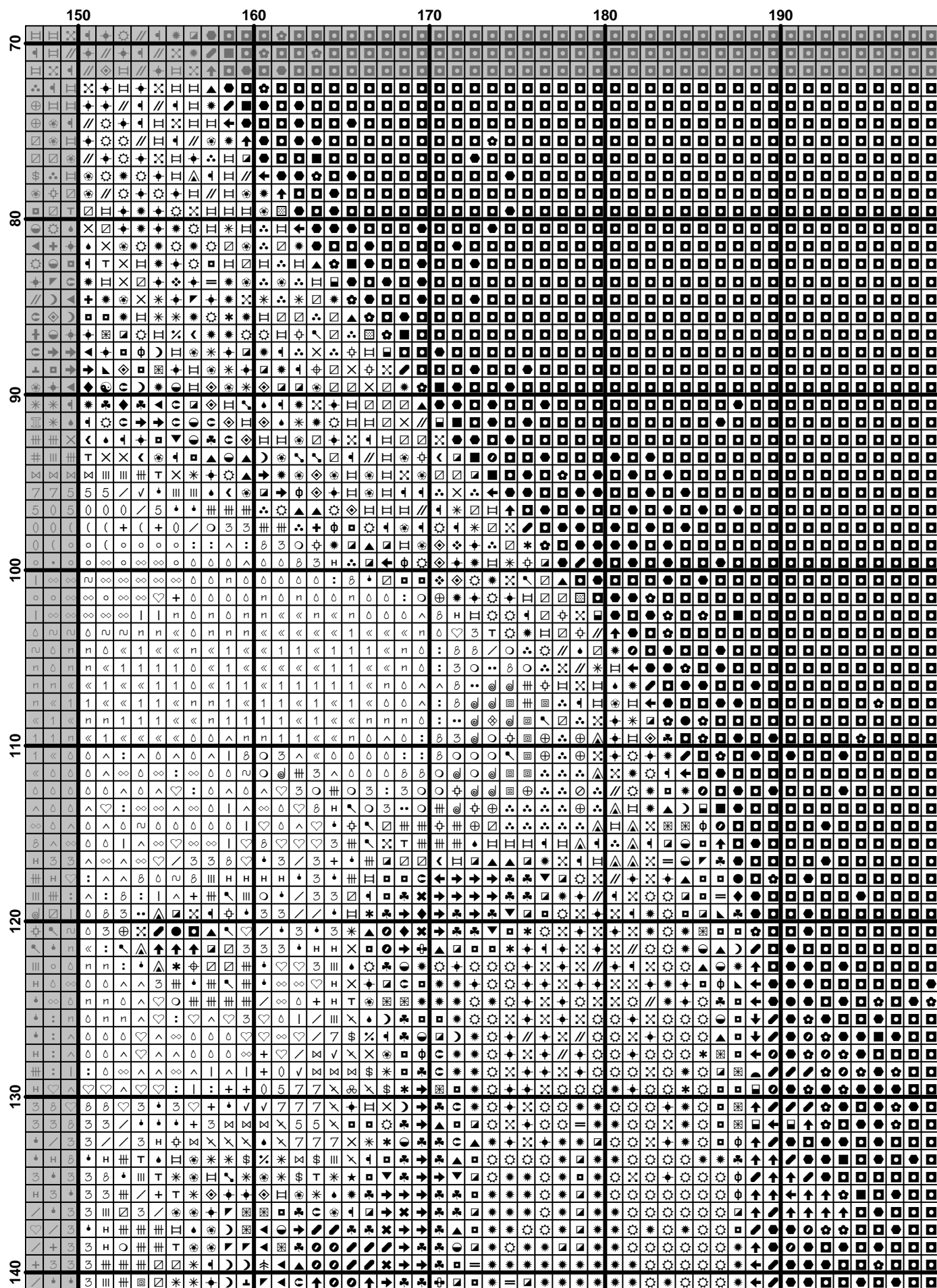
	150	160	170	180	190
10					
20					
30					
40					
50					
60					
70					

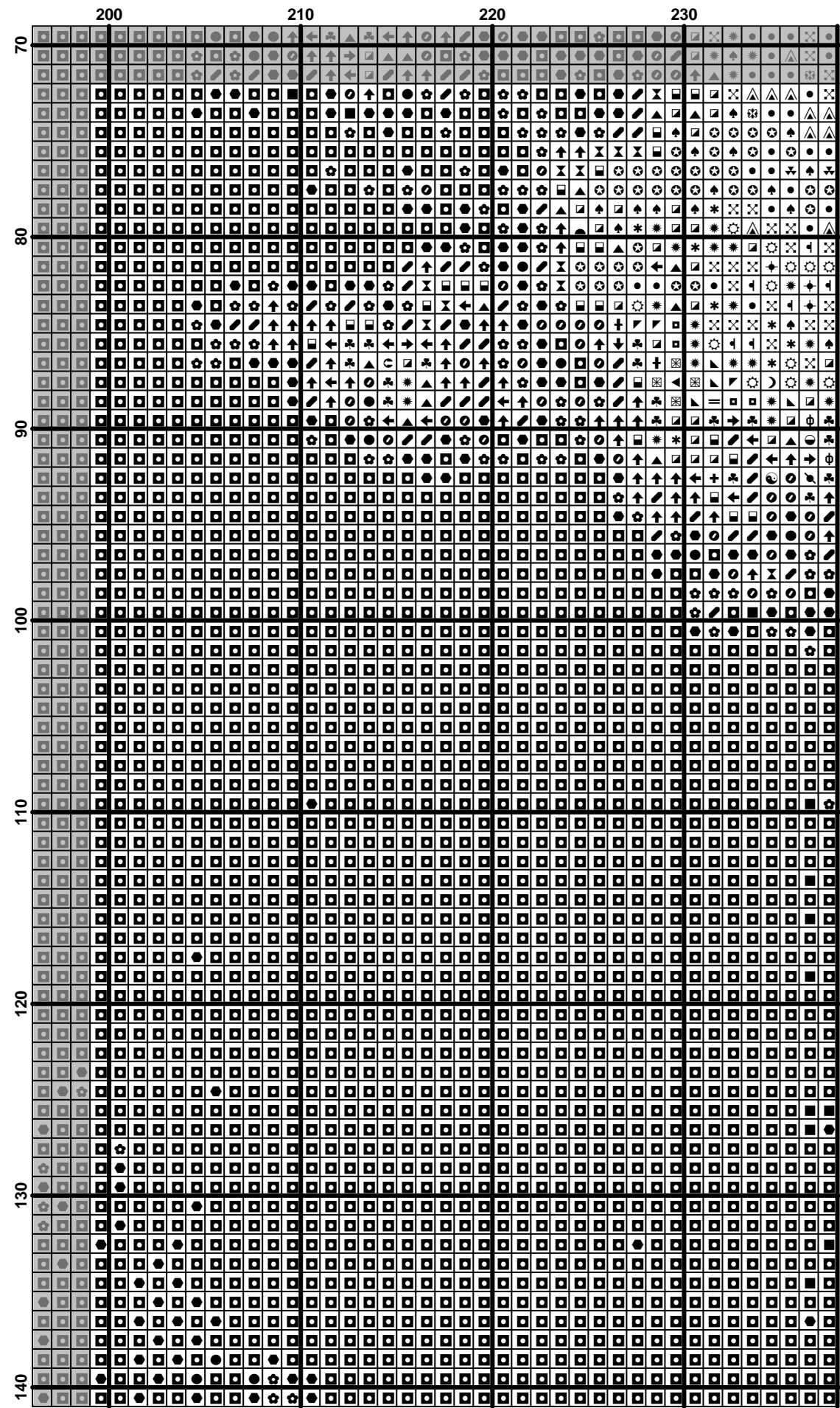






$$(13) \quad \mathcal{L}(\mathcal{A}) = \mathcal{L}(\mathcal{B}) \quad (14)$$

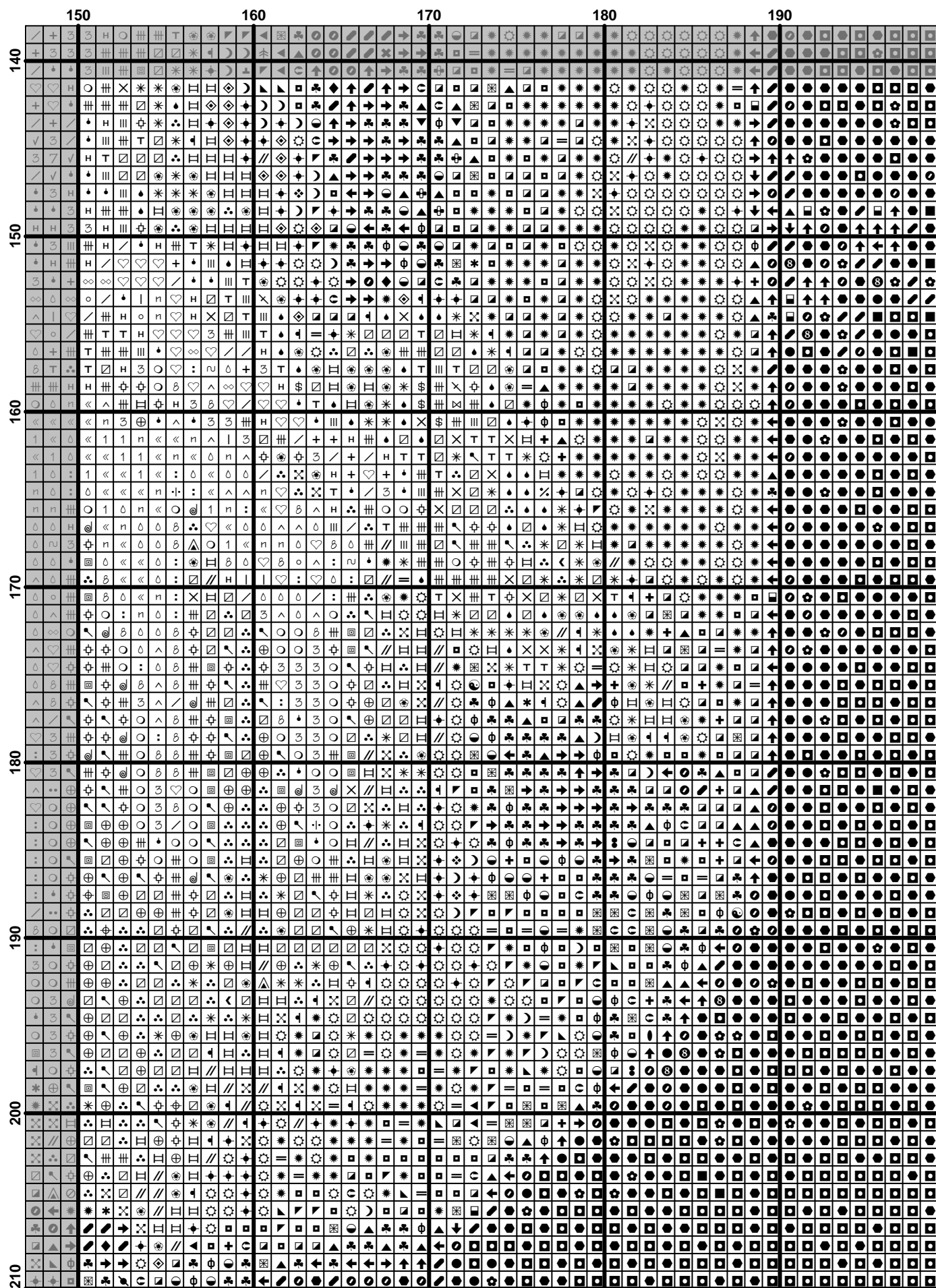


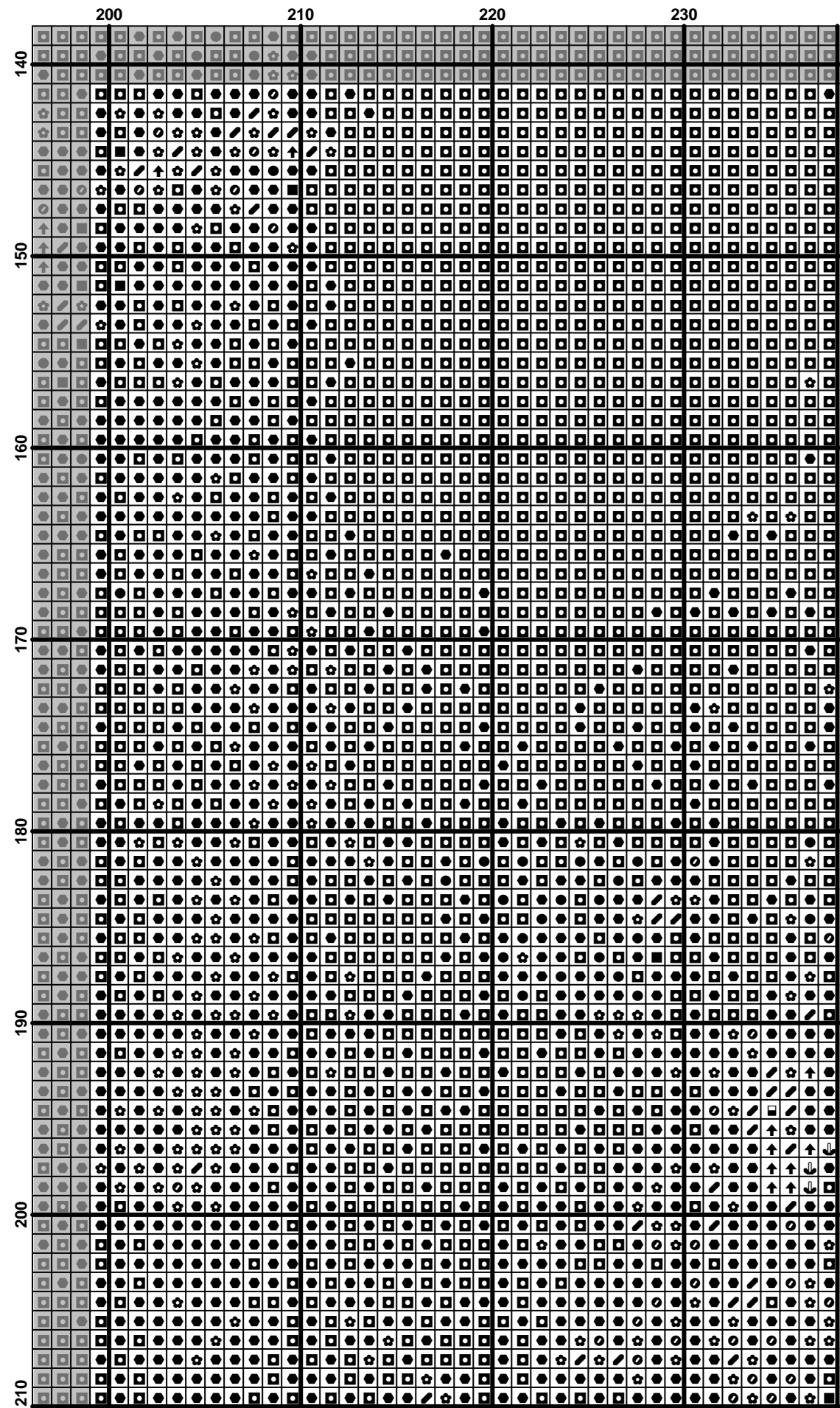


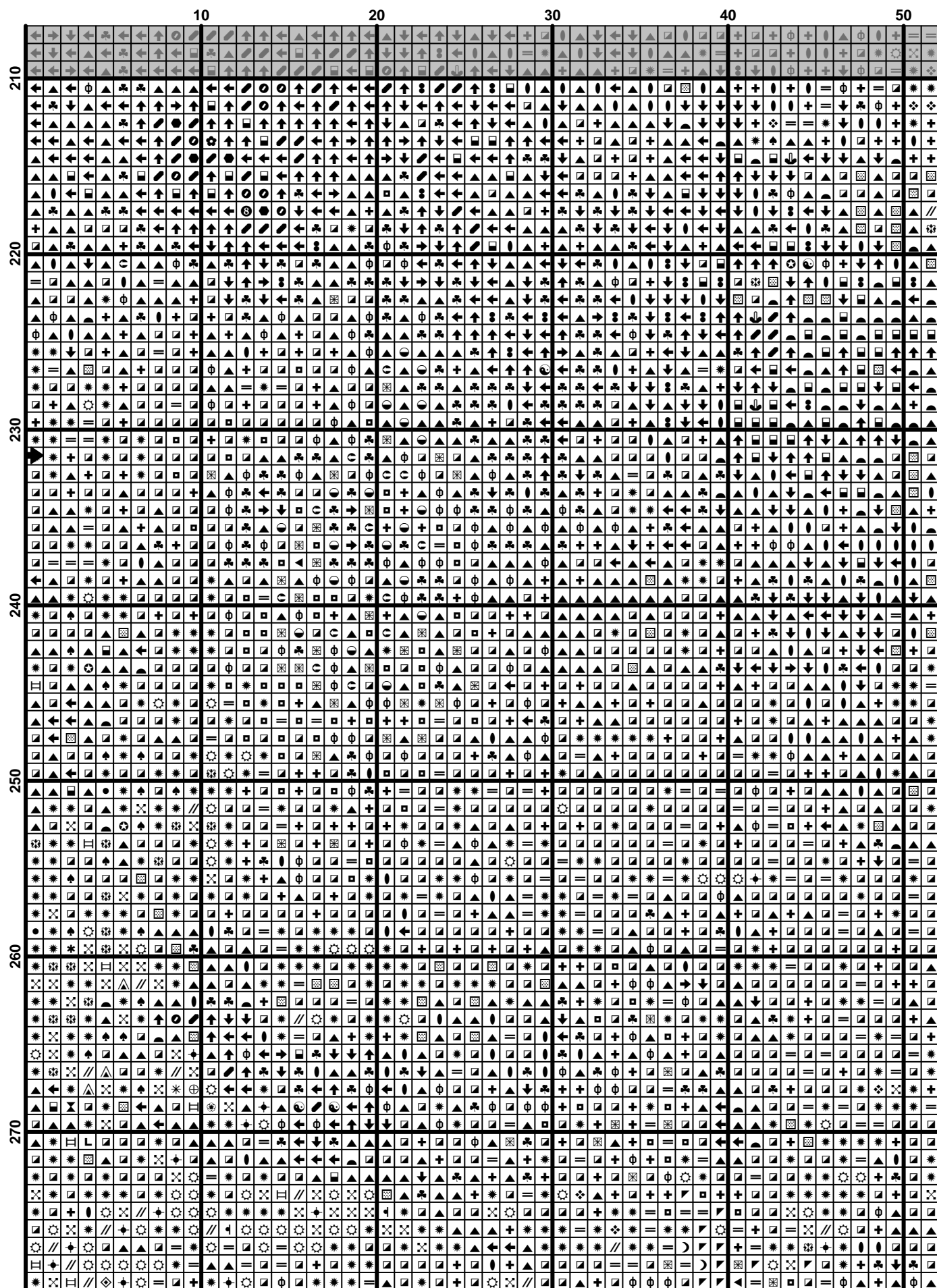
[illegible]

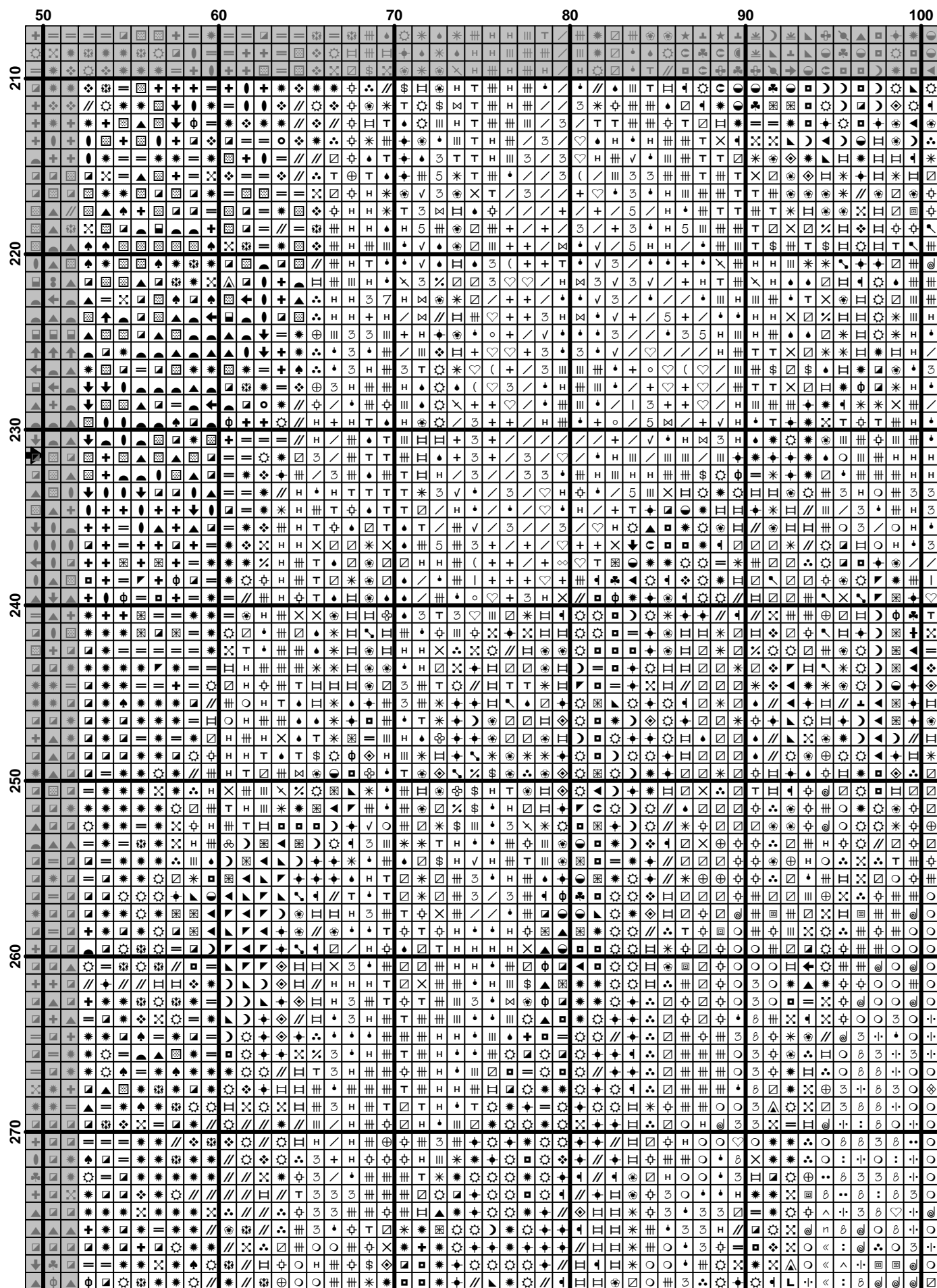
[illegible]

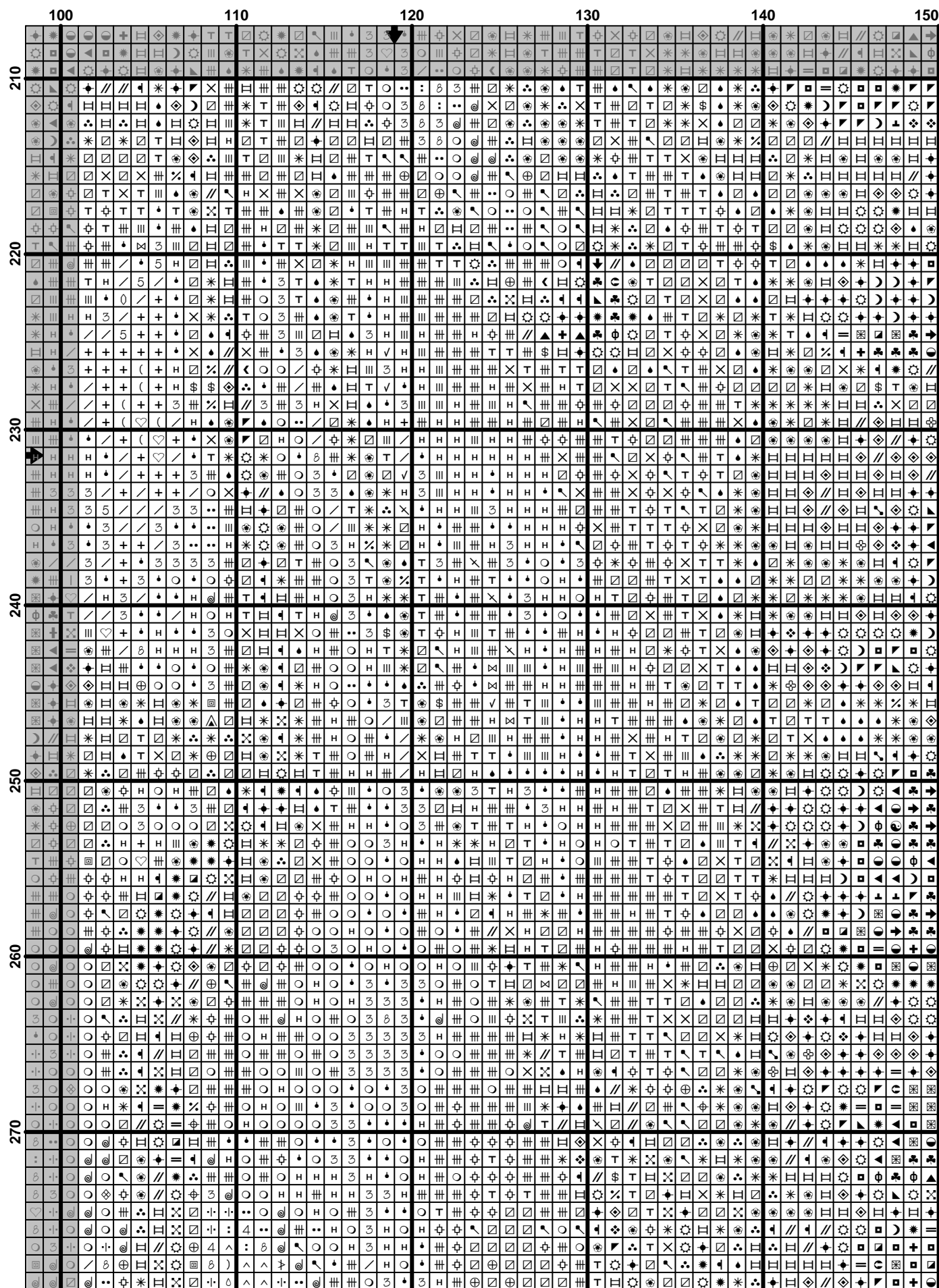
	100	110	120	130	140	150
140
150
160
170
180
190
200
210

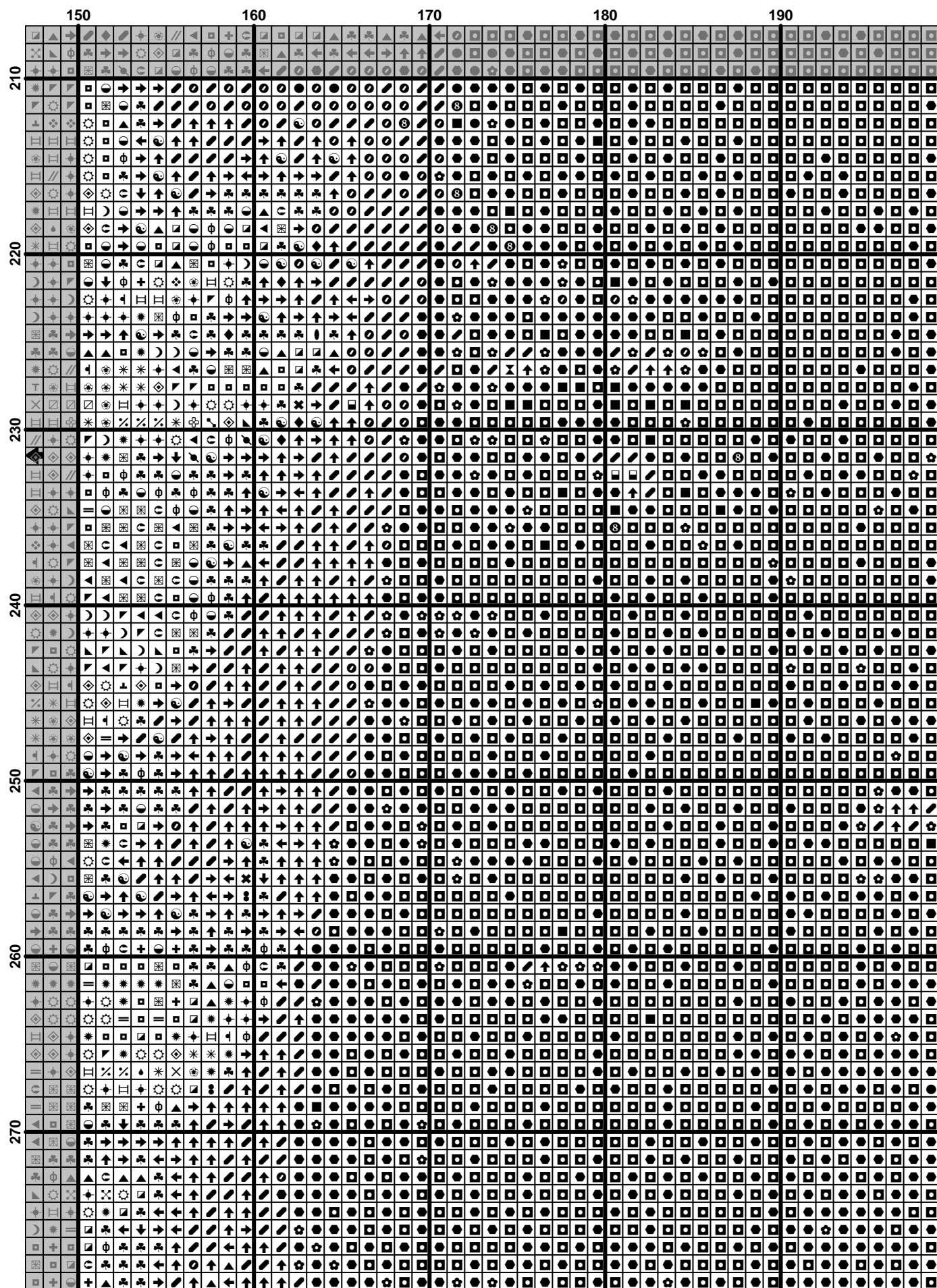










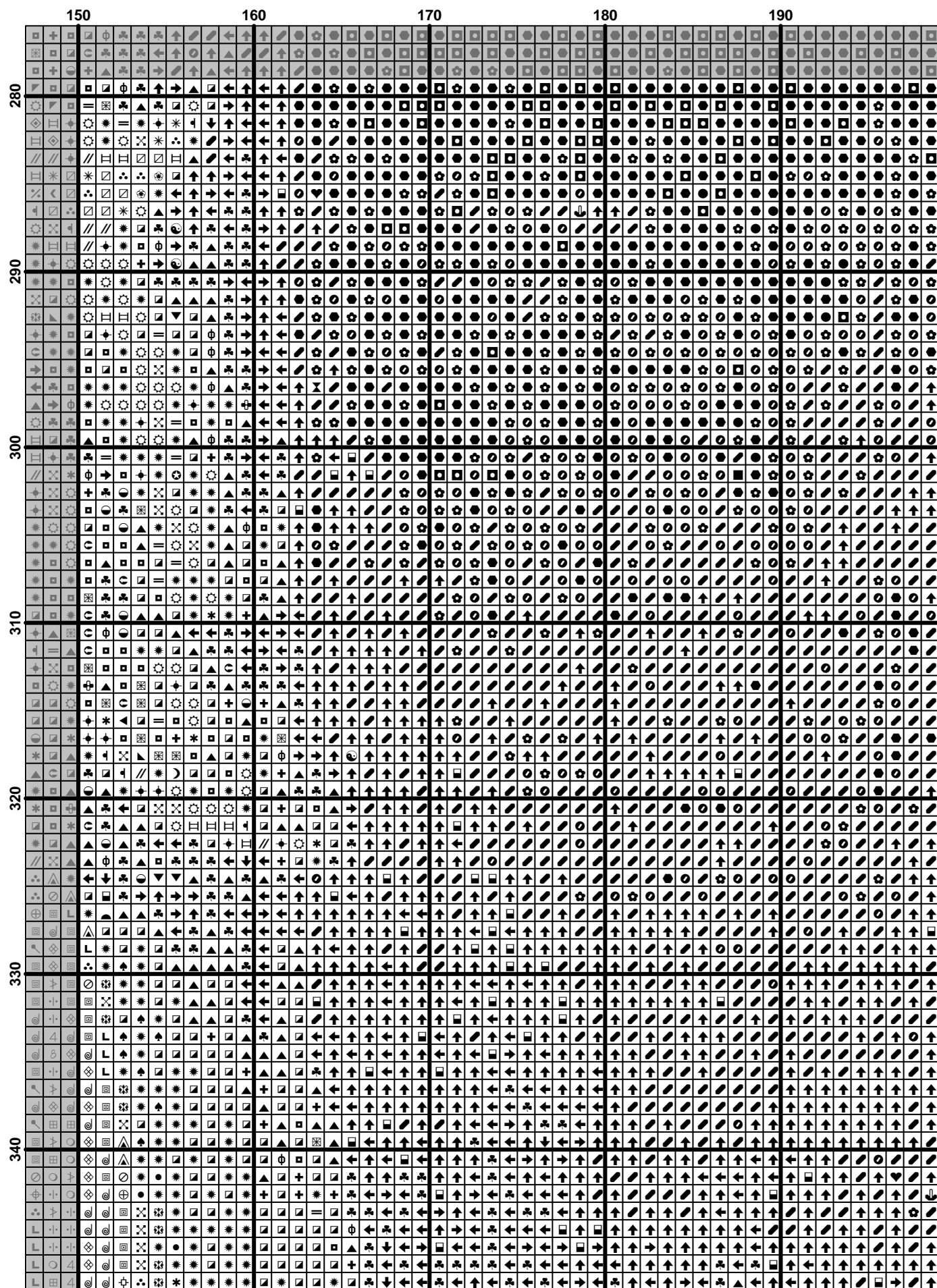


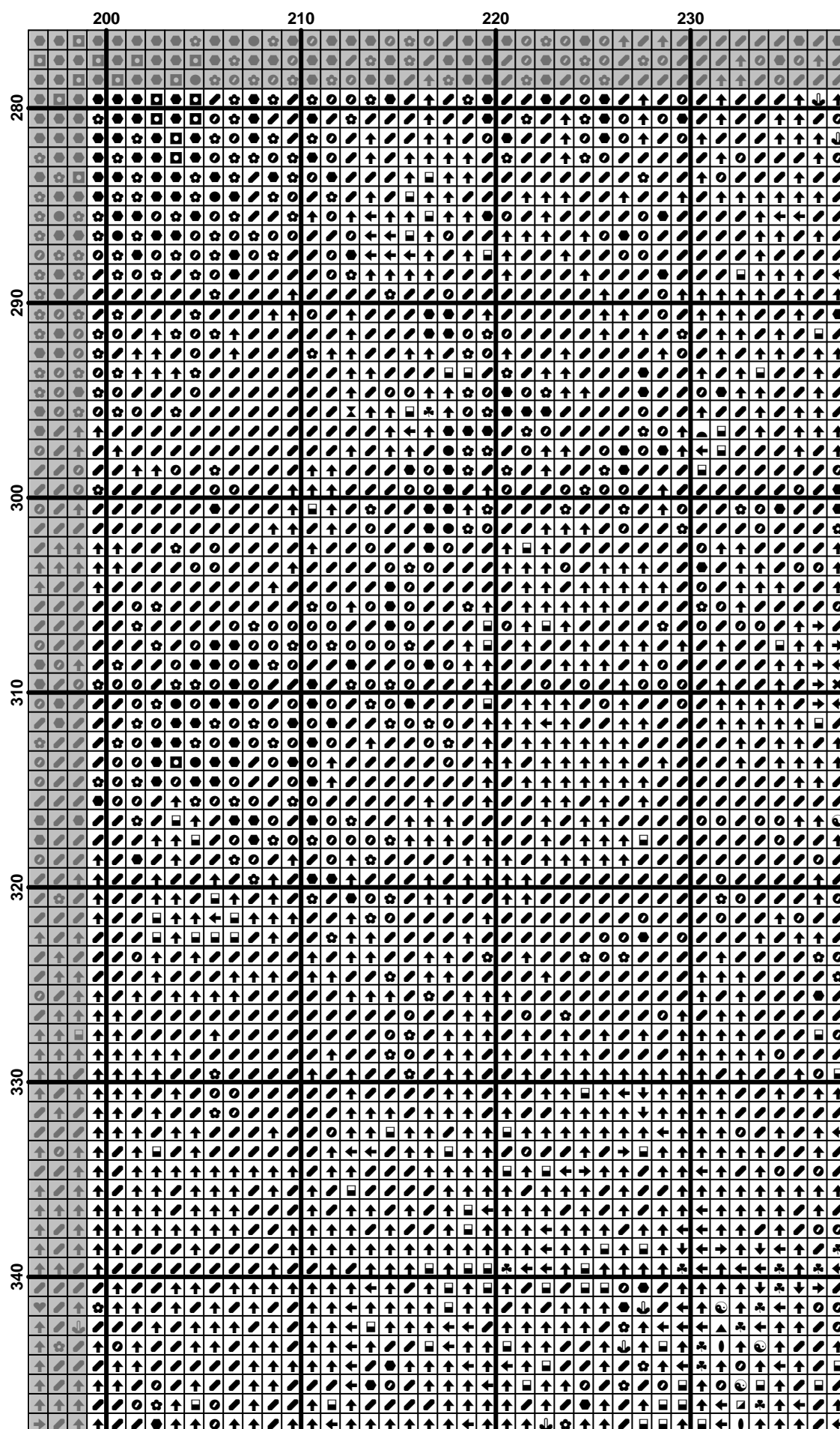


	10	20	30	40	50
280					
290					
300					
310					
320					
330					
340					

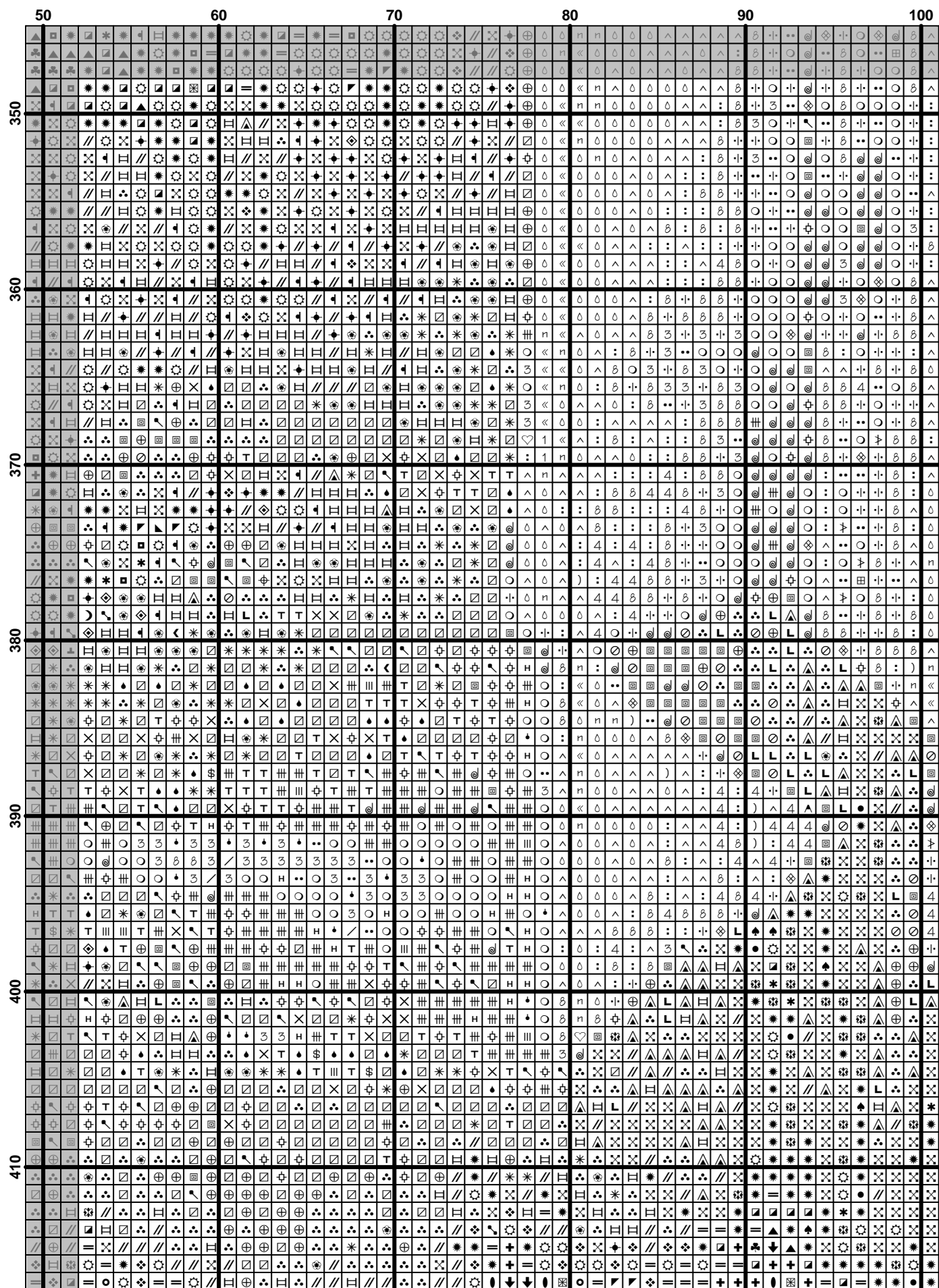
$$(27) \quad \mathcal{L}(\mathcal{A}) = \mathcal{L}(\mathcal{B}) \quad (28)$$

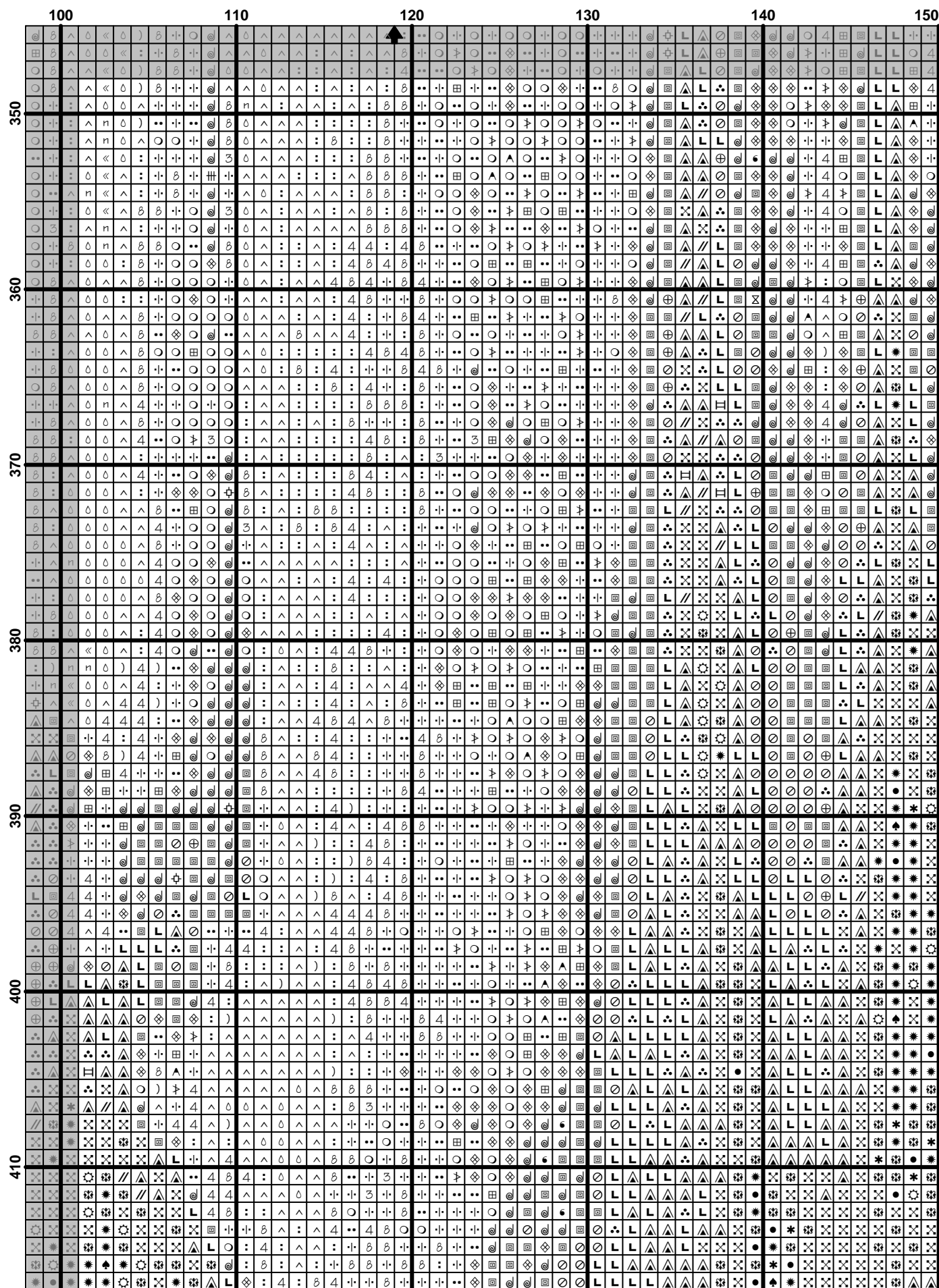
(29)

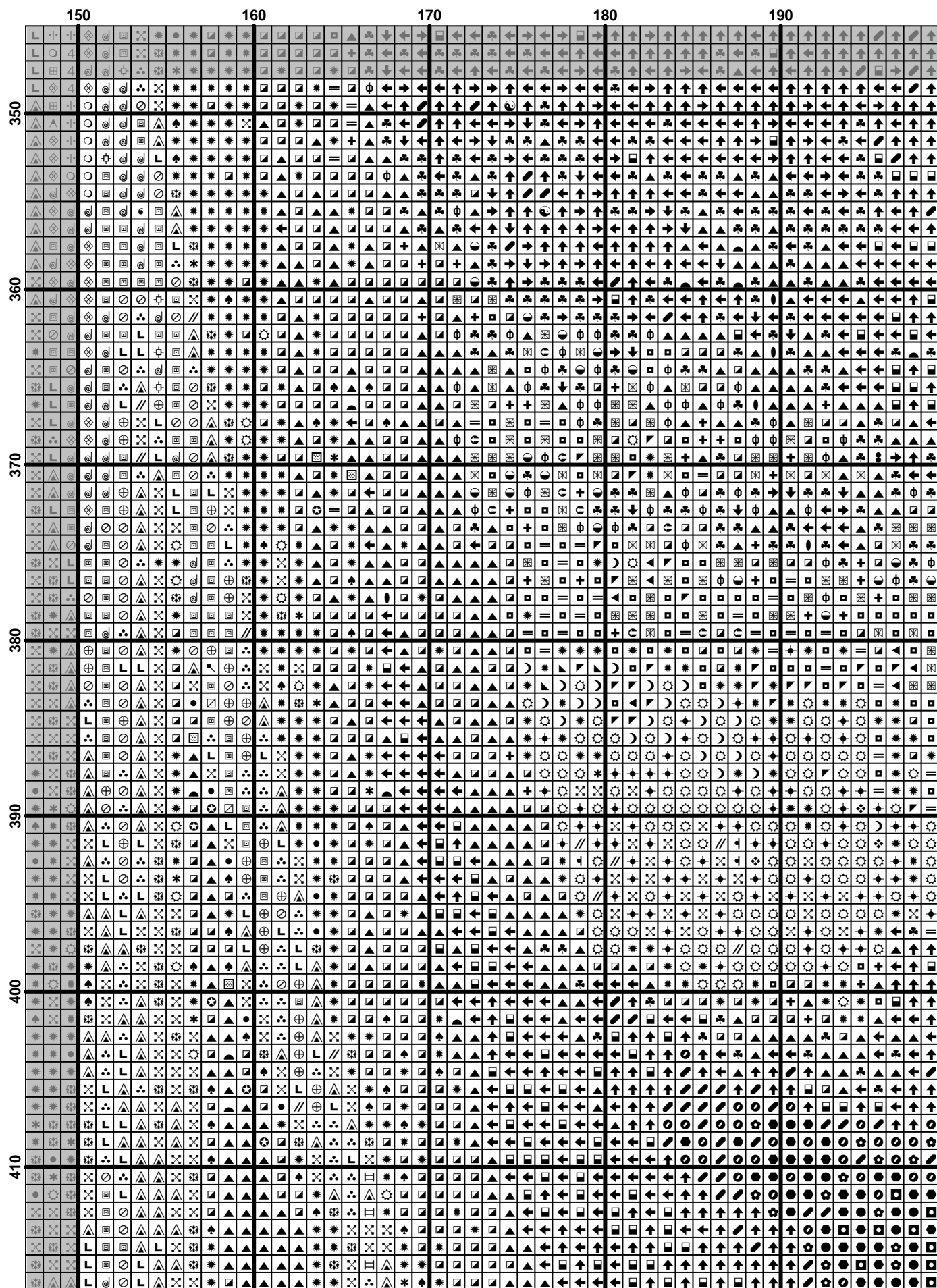


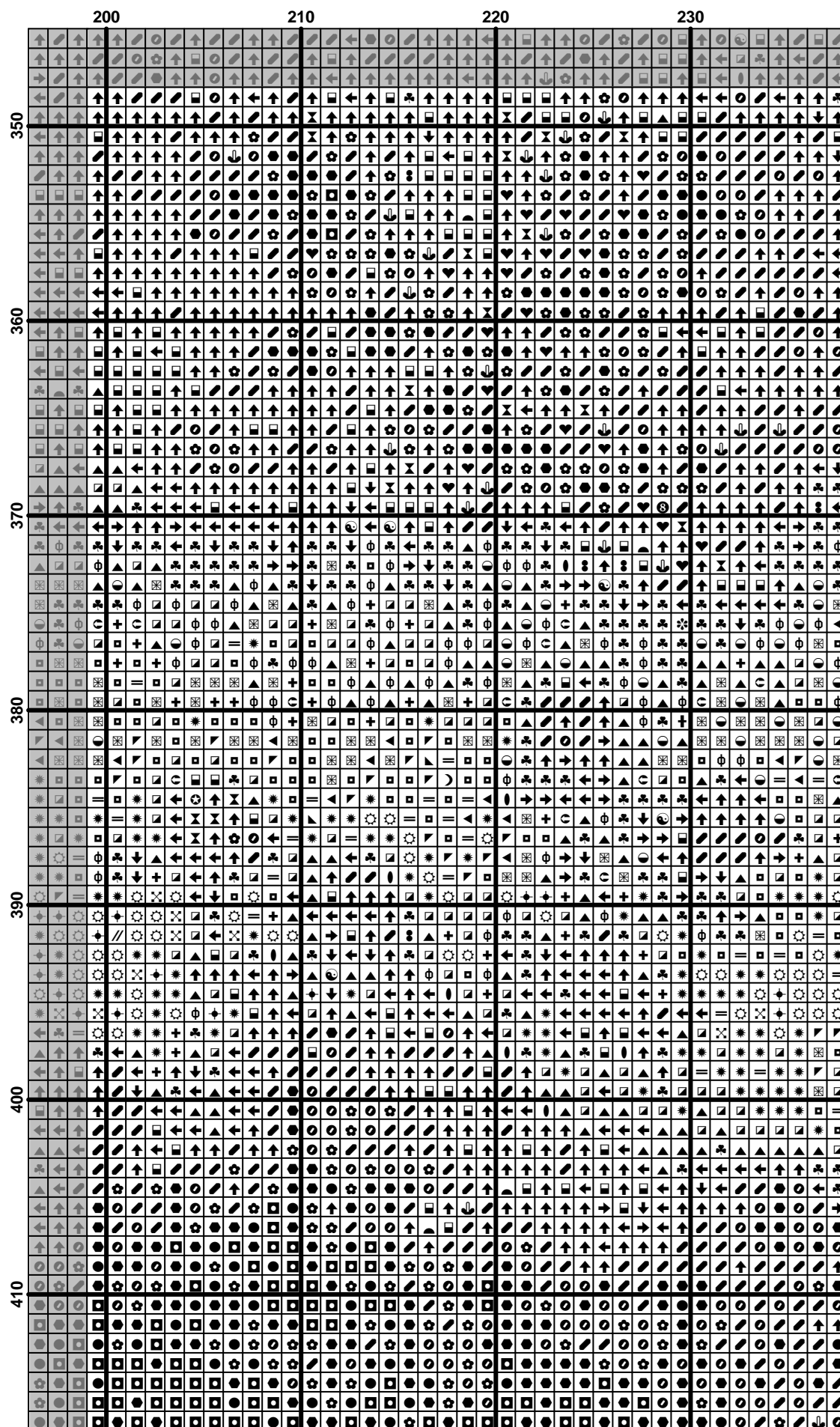


$$(31) \quad \frac{1}{\Gamma(\alpha)} \int_0^t (t-s)^{\alpha-1} f(s) ds = \frac{1}{\Gamma(\alpha)} \int_0^t (t-s)^{\alpha-1} f(s) ds$$









	10	20	30	40	50
420					
430					
440					
450					
460					

